

MEMBERSHIP

at

THE HUB

on Verulam



CONTENTS

02 - WHO WE ARE

03 - OUR MEMBERSHIPS

05 - SOCIAL MEMBERSHIP

06 - MATERNITY MEMBERSHIP

07 - WORKING MEMBERSHIP

08 - TEAM MEMBERSHIP

09 - PRICING

11 - PERKS

13 - CORPORATE AND DDR

15 - MEMBERS EVENTS

17 - FAQs

20 - CONTACT US

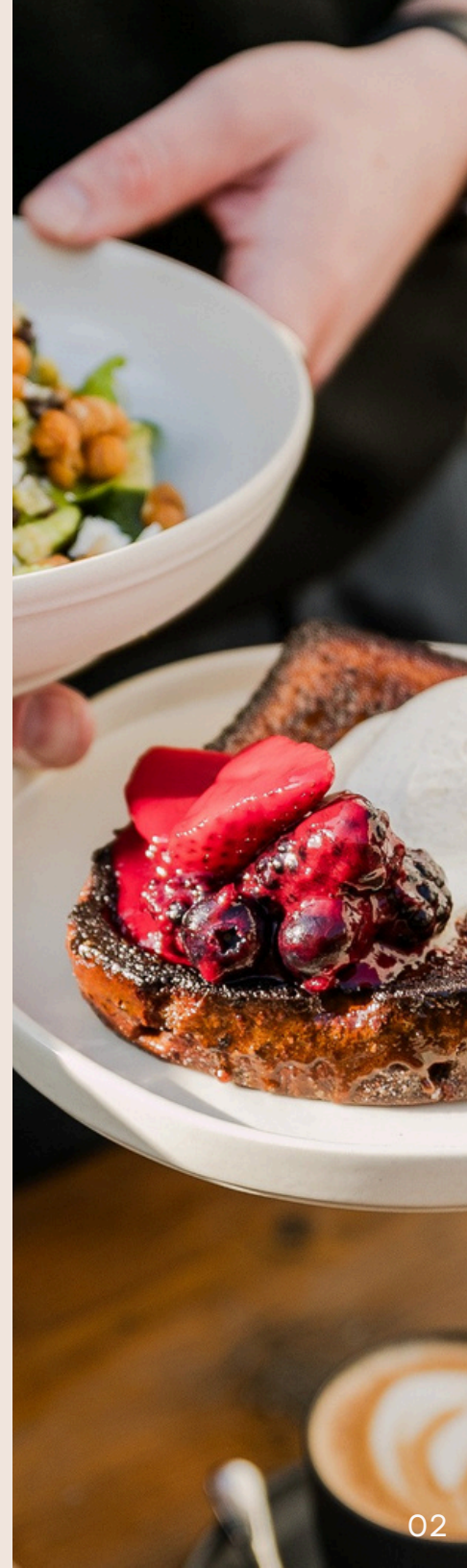
WHO WE ARE

There are places you visit, and there are places you belong.

Membership at The Hub on Verulam opens the door to beautifully designed spaces to work or socialise. Designed for those that ask for more; more energy, more joy, more connection.

With our working, social and maternity membership options, you choose exactly what you need. A space to collaborate, celebrate, build your community or simply take a moment to yourself.

We hope you enjoy what's been created here.

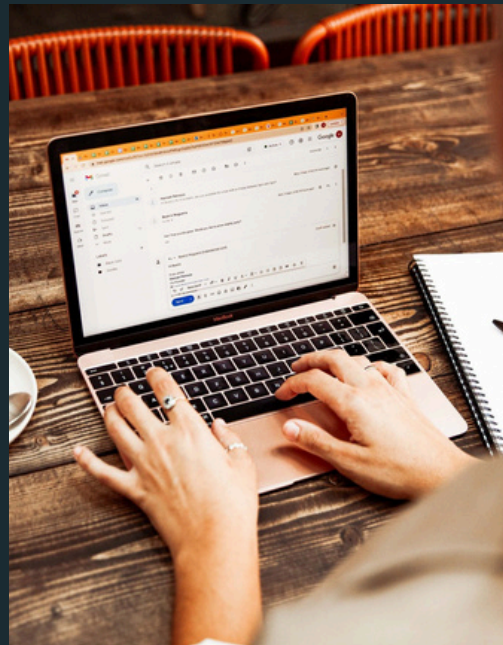
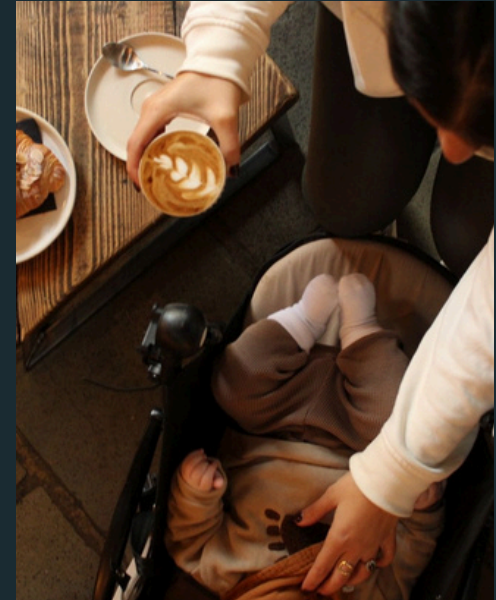


OUR MEMBERSHIPS

SOCIAL



MATERNITY



WORKING

TEAM & FAMILY



SOCIAL MEMBERSHIP

Our Social Memberships are designed to create a home away from home. Perfect for those looking for community outside of the norm, real connections, purpose led events and a cosy place to have your coffee each day.

Perks include but are not limited to:

- ~ Complimentary barista hot or soft drink everyday
- ~ Free Film Tickets for you and 1 guest
- ~ 10% discount on all food
- ~ Free 'Members Event' every month
- ~ 50% discount on all 'Members Choice' items
- ~ Discounted tickets to all events

MATERNITY MEMBERSHIP

Designed by parents, for parents. Our Maternity Membership offers a safe space with a little style to keep you and your little ones busy.

Perks include **all those in our Social Membership** plus more;

- ~ Free tickets to all 'Baby and Me' screenings
- ~ 9 WFH (Work from Hub) laptop credits, in-line with KIT Days
- ~ 10% discount on all Lune and Wild organic baby food and snacks





WORKING MEMBERSHIP

Offering unlimited access to our members only co-working area.

Perks include but are not limited to:

- ~ Complimentary barista hot or soft drink everyday
- ~ Unlimited WFH (Work from Hub) credits
(a no laptop policy applies to non members)
- ~ Pre-opening access from 9am daily
- ~ 20% discount on all food
- ~ Free 'Members Event' every month
- ~ 50% discount on all 'Members Choice' items

TEAM & FAMILY MEMBERSHIP

Ideal for small businesses or families alike.

Allowing up to 10 registered users per membership with 2 users able to WFH at any one time.

Perks for all members within your team are **the same as those for our individual Working Membership.**



PRICING

	YEARLY	MONTHLY (DIRECT DEBIT)	ROLLING (DIRECT DEBIT)
SOCIAL	£300	£27.50	-
MATERNITY**	£270	£32.50	-
WORKING	£950 + VAT	£87 + VAT	£108 + VAT*
TEAM & FAMILY	1750 + VAT	160 + VAT	£195 + VAT*

a one-off £25 joining fee applies to all new memberships

*a 30-day cancellation notice period applies

** Maternity Memberships are for 9-month contracts only



PERKS



SOCIAL

Free Barista Drink with every visit

Free Film Tickets for you and 1 guest

Discounted Event Tickets

Exclusive Hire Options

Free Monthly Members Event

Access to Whatsapp Concierge

Ability to book tables in the Yard

50% of Members Choice Items

10% Discount on Food

Free Bottle of Prosecco on your Birthday

Refer a Friend Bonus

Members Happy Hour



MATERNITY

All Social Perks +

10% off Lune and Wild Organic Baby Food

Free tickets to all our Parent and Baby Mixers

Ease back to work - 10 days of work from Hub credits to use in line with KIT days

Ability to transfer membership between parents or caregivers for shared parental leave

9-month only Contract



WORKING

All Social Perks +

Unlimited Work from Hub Credits

Extra 10% Discount on Food Mon-Fri

Access to our Members Only Workspace, 9am-6pm Mon-Fri

Pre-opening access from 9am, Mon-Fri



TEAM & FAMILY

All Social Perks +

Unlimited Work from Hub Credits

Extra 10% Discount on Food Mon-Fri

Access to our Members Only Workspace, 9am-6pm Mon-Fri

Pre-opening access from 9am, Mon-Fri

Add up to 10 Team or Family Members to 1 Membership. (only 2 laptops allowed at any one time)

CORPORATE EVENTS

We are able to accommodate bespoke corporate requirements such as launches, networking or celebration events. Please speak with our event team for further info.

DDR PACKAGE

INCLUSIONS:

(available from 8 guests to 32 guests)

- ~ Exclusive hire of the agreed space
- ~ Use of the 120inch screen for presentations or video viewing purposes
- ~ Tea, Coffee, Orange Juice and Pastries on arrival
- ~ Chefs choice buffet lunch
- ~ Lunchtime refreshments (tea, coffee, orange juice)

£40 per person

(additional coffee breaks are charged at £3 per person, per break)



MEMBERS EVENTS

Each month members are invited to a free ‘members only’ event.

From cocktail masterclasses and decadent supper clubs to informative presentations from industry experts. These events are designed to quench the community’s thirst for knowledge, networking and entertainment.

Places at each event are available on a first come, first served basis and if availability allows, members are able to invite a plus one.

Members also receive discounts on in-house events such as our sell out ‘Mini Mornings’, creative workshops and live productions such as cinema supper clubs and venue takeovers.



FAQs

How do I become a member?

You can sign up on our website today, follow the options to select your membership and payment option. Once completed you will receive an email from our team and a link to set up your Membership Portal.

How reliable is your WIFI?

We have separate members-only wifi to ensure the very best connection.

Do you offer trial days or guest passes?

Yes, you can book a £25 trial day voucher on our website which is redeemable against food and drink during your visit.

Do I need to book workspace, or can I just turn up?

Our workspace is first come first served, we have plenty of spots varying in atmosphere to work from throughout the space, suited to your changing needs each day.

Are there quiet areas and private working spaces?

Our members-only workspace is a quiet space to set up for the day. If you need privacy for a call, we have multiple spots such as our screening rooms or the snug booth, which is bookable in advance.

Can I bring guests to the bar or restaurant?

We welcome guests. Perks include your member food discount which applies to your entire table, as well as this - all members can bring a free guest to the cinema.

When is The Hub on Verulam open?

Early members access is from 9am on weekdays, our kitchen opens from 10am.

Mon-Tues: 9am-6pm

Wed-Fri: 9am-11pm

Sat: 10am-11pm

Sun: 10am-6pm

Can I transition from a rolling to an annual Contract?

Yes, you're welcome to try out our membership on a rolling basis to ensure it works for you. When you are ready to transition to an annual membership, our Membership Team will be happy to assist.

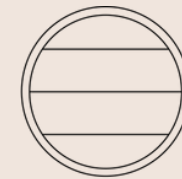
What is the cancellation policy?

We hope you'll love being part of The Hub on Verulam - but if you need to cancel, we require 30days' notice in writing prior to either your annual renewal or rolling contract date.

What happens when you are closed for Private Events?

On occasion we have exclusive hire events (a perk only available to members). If we are closed on a working day we will always provide alternative workspace arrangements

Still have questions? Get in touch.



THE HUB
on Verulam

IF YOU HAVE ANY QUESTIONS PLEASE GET IN TOUCH...


For membership enquiries:
rhiannon@thehubonverulam.com

For private hire enquiries:
events@thehubonverulam.com


For in-house event enquiries:
emma@thehubonverulam.com

For restaurant reservations:
reservations@thehubonverulam.com

For anything else:
info@thehubonverulam.com

 01727855224

 thehubonverulam.com

 @thehubonverulam

OR WHATS APP US!...
Your personal Hub concierge
Number 01727627842